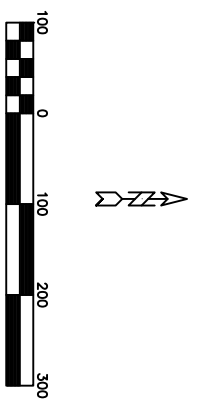


SEE SHEET 1

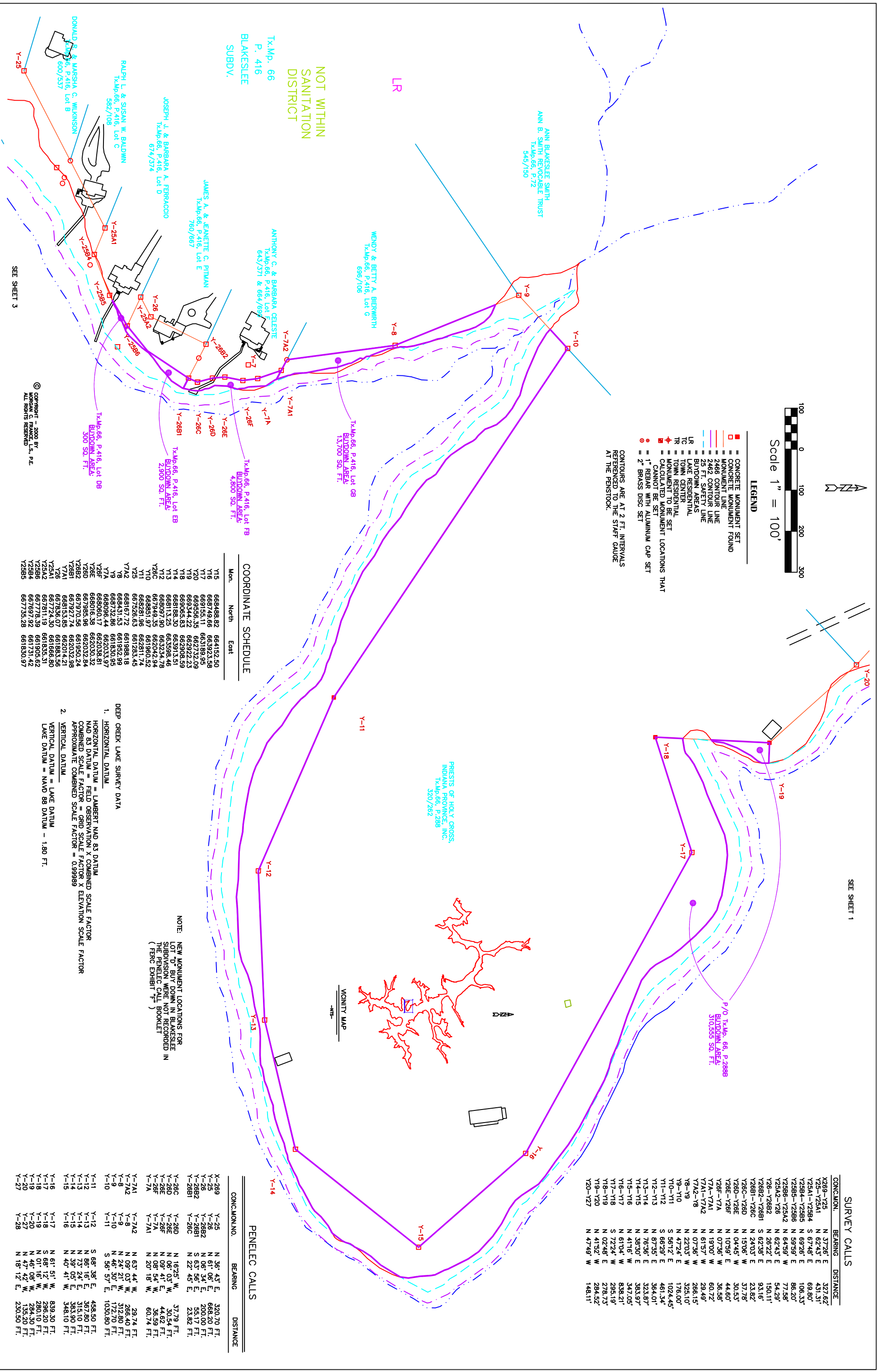
SEE SHEET 1



**LEGEND**

- CONCRETE MONUMENT SET
- MONUMENT FOUND
- MONUMENT LINE
- 2468 CONTOUR LINE
- 2492 CONTOUR LINE
- 2492 CONTOUR LINE
- BUILDING AREAS
- LR = LAKE RESIDENTIAL
- TR = TOWN RESIDENTIAL
- TC = TOWN CENTER
- CALCULATED MONUMENT LOCATIONS THAT CANNOT BE SET
- 1" REBAR WITH ALUMINUM CAP SET
- 2" BRASS DISC SET

CONTOURS ARE AT 2 FT. INTERVALS REFERENCED TO THE STAFF GAUGE AT THE PENSTOCK.



**COORDINATE SCHEDULE**

Mon.	North	East
Y15	668488.82	664152.50
Y16	668749.66	663323.98
Y17	668753.15	663193.90
Y18	668934.22	662022.23
Y19	668965.85	662008.59
Y20	668188.30	663913.51
Y21	668813.25	663598.46
Y22	668097.90	663204.78
Y23	667949.35	661960.52
Y24	668851.97	661960.52
Y25	668281.95	662811.74
Y26	668197.72	661989.18
Y27	668132.58	661926.89
Y28	668006.44	662033.97
Y29	668060.17	662038.81
Y30	667985.96	662032.84
Y31	667970.56	661950.24
Y32	667927.74	662032.98
Y33	668153.85	662014.21
Y34	667836.07	661883.56
Y35	667724.30	661883.56
Y36	667778.39	661905.62
Y37	667697.92	661731.42
Y38	667735.28	661830.97

NOTE: NEW MONUMENT LOCATIONS FOR SUBDIVISION NOT RECORDED IN THE PENELEC CALL BOOKLET (FERC EXHIBIT "C")

- DEEP CREEK LAKE SURVEY DATA**
- HORIZONTAL DATUM
  - VERTICAL DATUM = LAKE DATUM
- HORIZONTAL DATUM = LAMBERT NAD 83 DATUM**  
 NAD 83 DATUM = FIELD OBSERVATION X COMBINED SCALE FACTOR  
 COMBINED SCALE FACTOR = GRID SCALE FACTOR X ELEVATION SCALE FACTOR  
 APPROXIMATE COMBINED SCALE FACTOR = 0.99899
- VERTICAL DATUM = LAKE DATUM**  
 LAKE DATUM = NAD 88 DATUM - 1.80 FT.

**PENELEC CALLS**

CONC./MON. NO.	BEARING	DISTANCE
Y-289	N 36° 43' E	320.70 FT.
Y-25	N 61° 06' E	668.20 FT.
Y-26	S 63° 56' E	45.17 FT.
Y-2881	N 22° 45' E	23.82 FT.
Y-286	N 16° 25' W	37.79 FT.
Y-280	N 06° 03' W	30.54 FT.
Y-28F	N 09° 41' E	44.82 FT.
Y-7A	N 08° 54' W	36.59 FT.
Y-7A	N 20° 18' W	80.74 FT.
Y-7A1	N 63° 44' W	29.74 FT.
Y-7A2	N 03° 03' W	26.46 FT.
Y-9	N 24° 21' E	312.20 FT.
Y-8	N 46° 30' E	172.70 FT.
Y-10	S 56° 57' E	1030.80 FT.
Y-11	S 66° 36' E	458.50 FT.
Y-12	N 86° 16' E	367.80 FT.
Y-13	N 73° 24' E	315.10 FT.
Y-14	N 39° 05' E	383.90 FT.
Y-15	N 40° 41' W	348.10 FT.
Y-16	N 61° 51' W	839.30 FT.
Y-17	S 66° 12' W	286.20 FT.
Y-18	N 01° 16' W	280.10 FT.
Y-20	N 46° 08' W	284.30 FT.
Y-27	N 47° 42' W	135.20 FT.
Y-28	N 18° 12' E	230.50 FT.

DRAWN BY: SUSAN N. EVANS PERANDI  
 CHECKED BY: MORGAN C. FRANCE  
 DATE: 8/22/02

PROJECT: DEEP CREEK PROJECT BUY DOWN SURVEY

DATE: 7/10/00 at 8:40

PROJECT: DEEP CREEK PROJECT BUY DOWN SURVEY

DATE: 7/10/00 at 8:40

PROJECT: DEEP CREEK PROJECT BUY DOWN SURVEY

DATE: 7/10/00 at 8:40

PROJECT: DEEP CREEK PROJECT BUY DOWN SURVEY